

The aim of the **URM-PCS** unit is to supply an hardware and software system to easy control the motor's speed employing electronic drives of any kind and brand equipped with a $\pm 10\text{VDC}$ standard input.

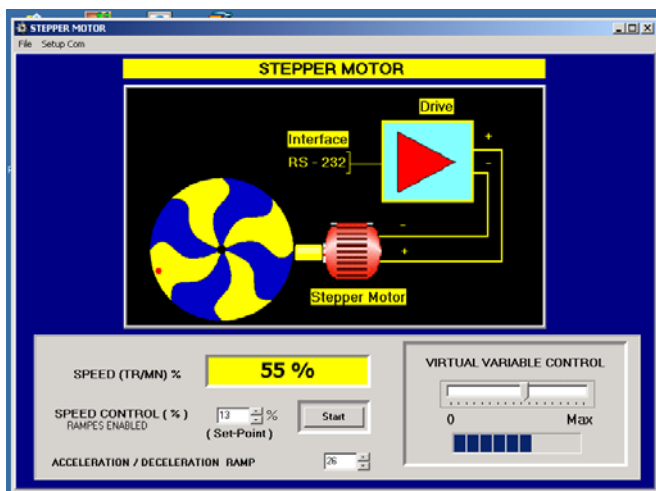
Mainly the system is composed by a fully autonomous hardware part and an interactive graphical software allowing to interact with the operator through suitable screen controls.

Besides of representing a complement to our URM-00 system, the **URM-PCS** unit is suitable to be immediately interfaced with any kind of PC or motor drives.



The **URM-PCS** communicates with the PC through a standard RS-232 serial port while the variable voltage control between the **URM-PCS** and the input drive is carried out through standard leads terminated on 2 mm. safety plugs.

The output voltage is available in the $0 \div 10\text{VDC}$ or $0 \div \pm 10\text{VDC}$ ranges.



FEATURES

The main features of the unit are the following:

A) HARDWARE:

- Unbreakable material case- container
- Silk-screened aluminium rear and front panels
- Supply: 230V / 50-60 Hz.
- Microcontroller (16 bit) control
- Conversion accuracy: 16 bit
- RS-232C standard input
- Signals outputs: $0 \div 10\text{VDC}$ or $0 \div \pm 10\text{VDC}$

B) SOFTWARE:

- Controls available on the screen
- Virtual potentiometer to set clockwise or counter-clockwise speed
- Setting of motor speed rate (%)
- Setting of acceleration/deceleration ramp
- Setting of the rotation direction (Determination of sense of rotation)
- Visualization of the motor speed (%)
- Graphical display of the virtual potentiometer position
- Windows '95/98/ME/2000/NT/XP environment
- Customisation available on request



Non contractual document. We reserve the right to change the specifications without any prior notice.